

THINK:
DIFFERENTLY.



OUR GROUP.

Federation of Leading Private Colleges.

7 Colleges + 160 Years of History.

Health & Wellness + Design + Business.

4 Sectors + Over 85 Courses.

7 Campuses: Sydney + Brisbane + Melbourne.

400+ Passionate Educators. 200 Support Staff.

Flexible and Online Learning.

Applied Education = Work Integrated Learning.

Division of Seek Education > Seek Limited

BUSINESS

APM COLLEGE OF BUSINESS
AND COMMUNICATION

WILLIAM BLUE COLLEGE OF
HOSPITALITY MANAGEMENT

DESIGN

BILLY BLUE
COLLEGE OF
DESIGN

CATC DESIGN
SCHOOL

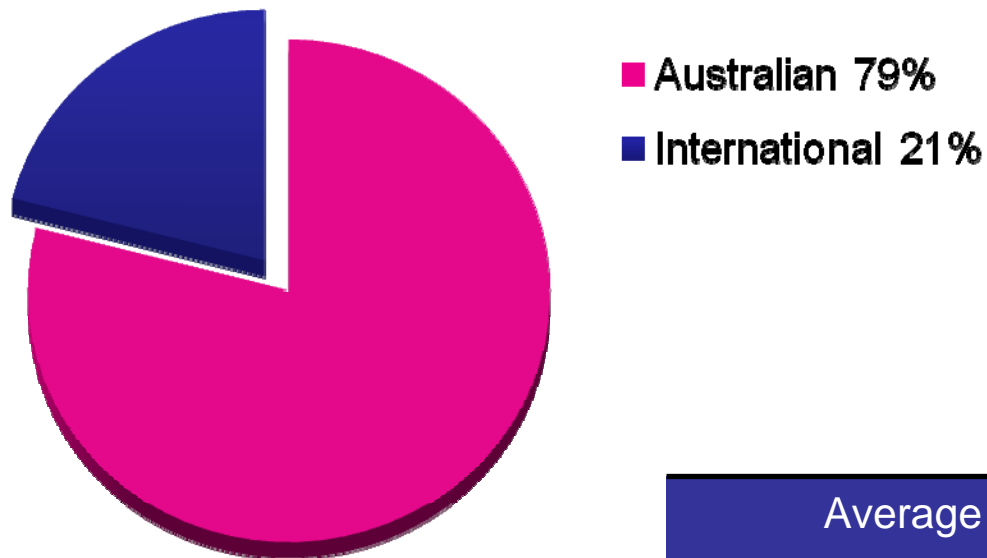
WELLNESS

AUSTRALASIAN COLLEGE OF
NATURAL THERAPIES

JANSEN NEWMAN INSTITUTE
OF COUNSELLING AND
APPLIED PSYCHOTHERAPY

AUSTRALIAN NATIONAL
COLLEGE OF BEAUTY

Over 6200 enrolled students...



	Average Age		Gender
	Australian	Overseas	% Female
APM	24	25	65%
ACNT	32	30	80%
BBCD	21	23	49%
CATC	27	27	71%
JNI	42	-	84%
WBCHT	21	24	51%

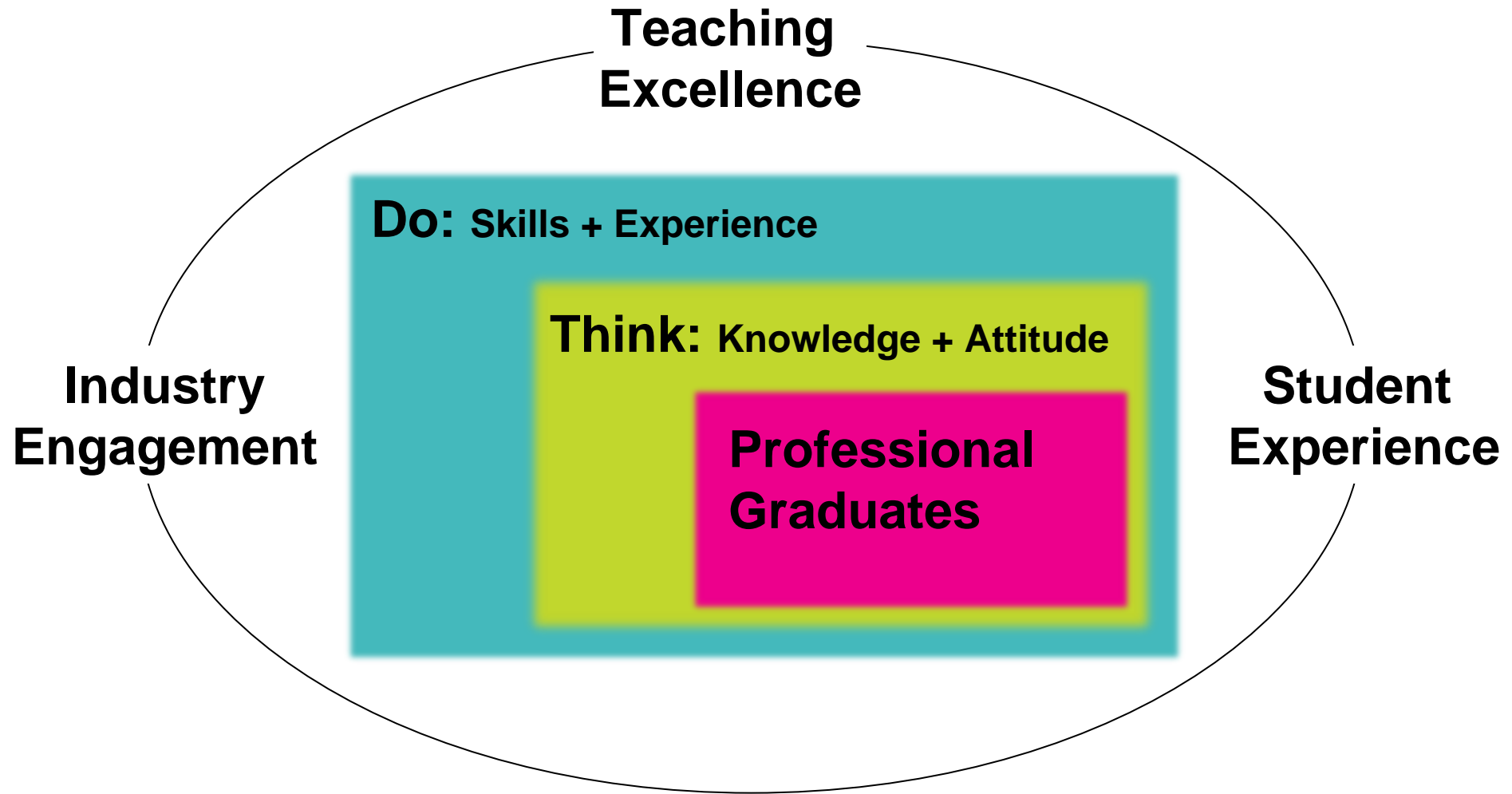
PHILOSOPHY.

Teaching excellence.
Industry connections.
Student experience.
Graduate outcomes.

To create the new
standard in applied
education.

VISION.

OUR MISSION.



OUR OPPORTUNITY.

STUDENTS:

Choice + Flexibility + Outcomes

INDUSTRY:

Professionals: Think + Do

GOVERNMENT:

Diversity + Productivity

THINK: NEXUS

EDUCATION + EMPLOYMENT

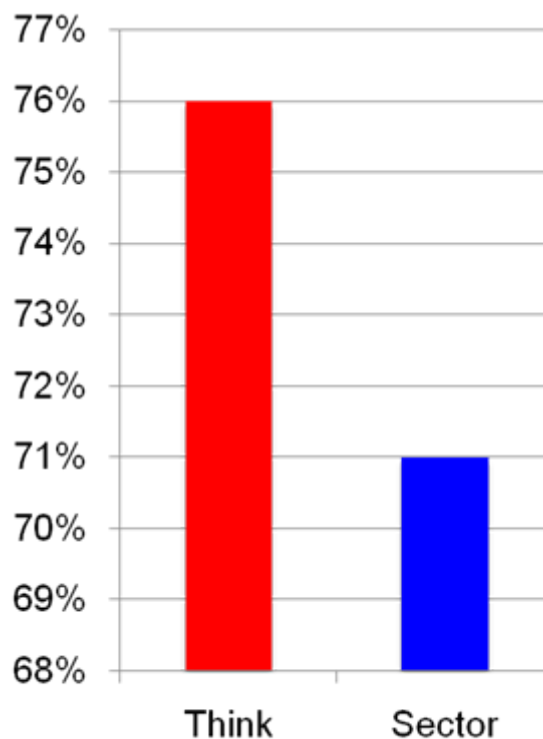
OUR QUALITY INDICATORS.

Graduate Satisfaction
Top 5 HE Institutions
(GCCA GDS 2008)

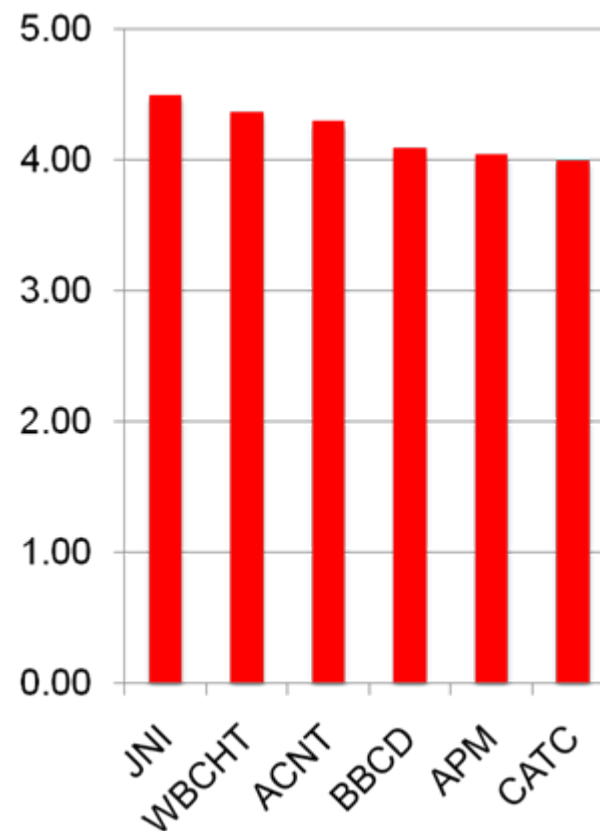
Bond	86.55
Swinburne	84.48
Notre Dame	81.91
Think: Colleges	81.60
Murdoch	81.04

Excluding theological colleges

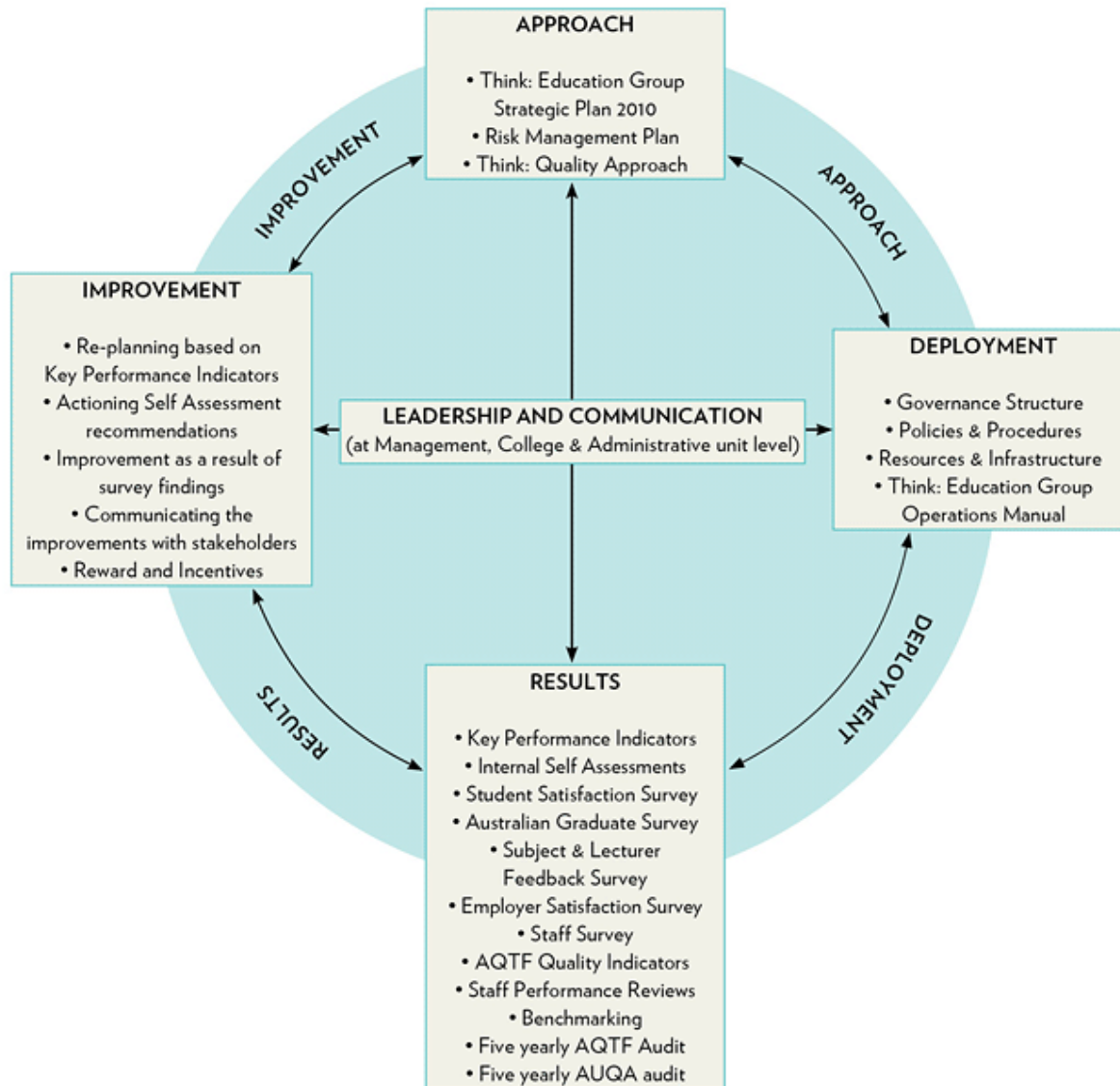
Graduate Employment
(GCCA GDS 2008)



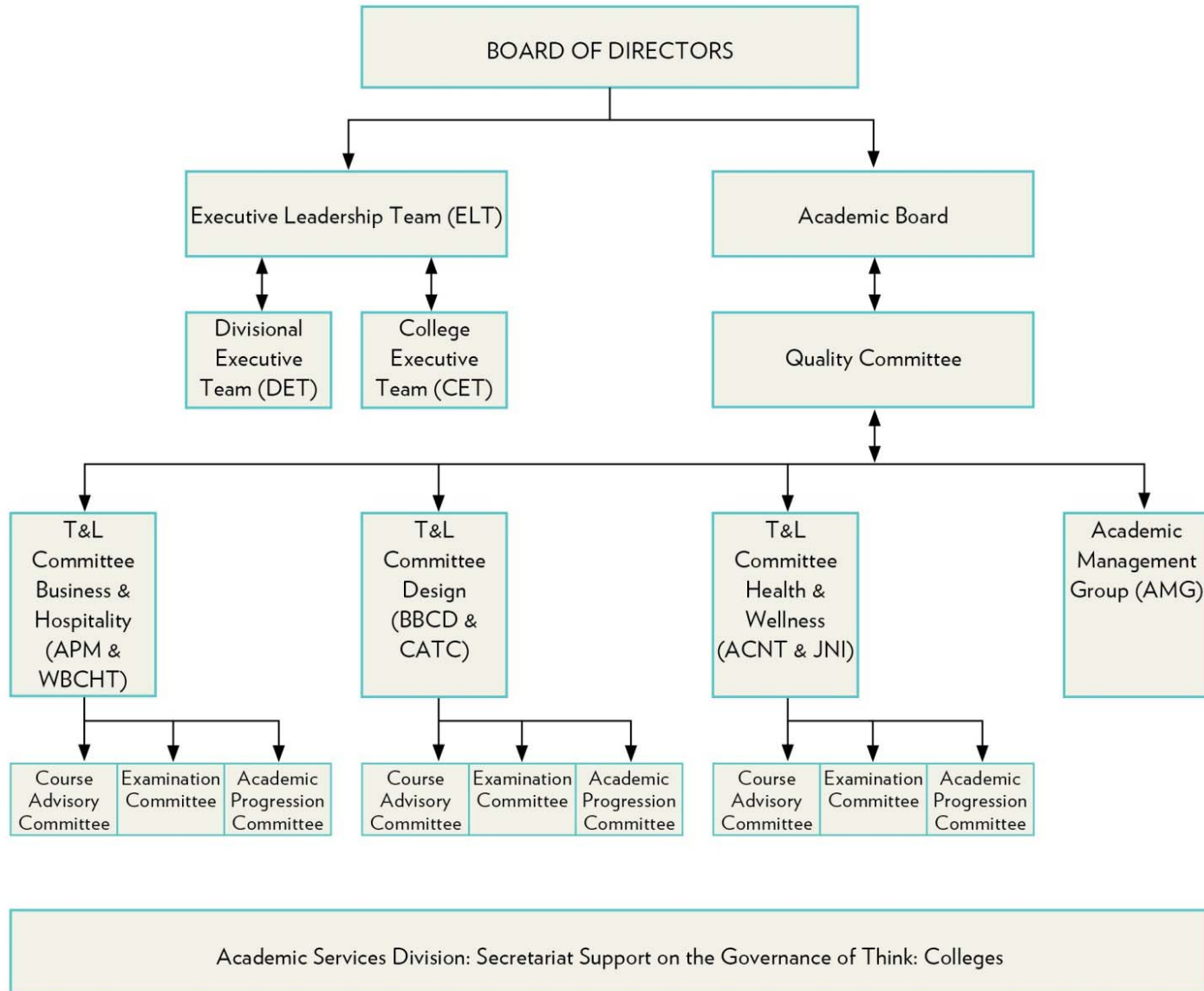
Student Satisfaction
(SESL T3)



OUR QUALITY FRAMEWORK.



OUR ACADEMIC GOVERNANCE.



OUR AUQA OUTCOMES.

- **Distinctive vision and mission**
- **Commitment to genuine self-review**
- **Effective industry consultation & engagement**
- **Commitment to students & engaged learning**
- **Sound approach to moderation of assessment**
- **Systematic use of performance data to improve Teaching & Learning and Quality Management**
- **Commendable career guidance & employment support**
- **Strong approach to preparation for HE delivery**

However...

Need to consider impact of growth on student experience